

804

PARTS CATALOGUE

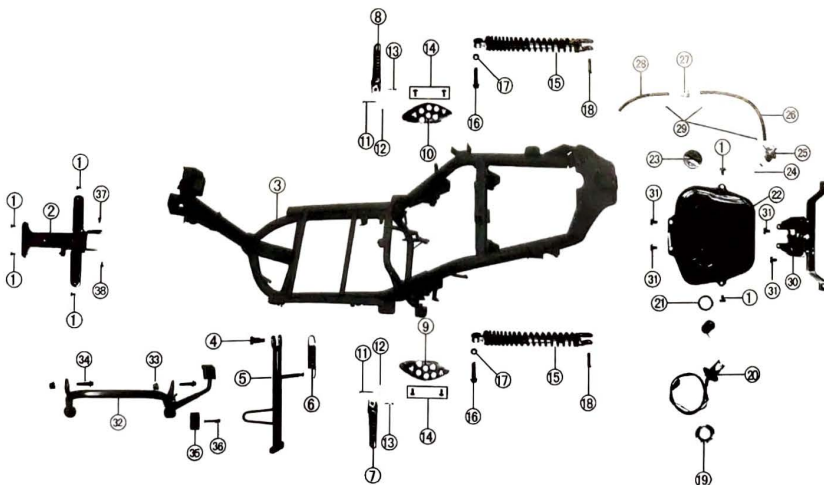


# 目 录

## GROUP

F-1	车架总成.....	1
	Frame Assy	
F-2	电器件总成/排气管.....	5
	Electric Device Assy/Muffler Assy	
F-3	发动机总成.....	9
	Engine Assy	
F-4	覆盖件总成.....	15
	Working Of Plastics Assy	
F-5	转向总成.....	21
	Turnning Assy	

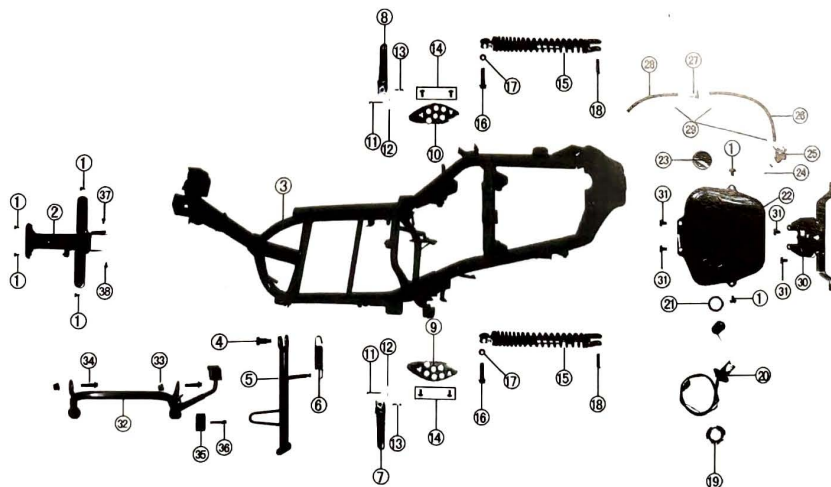
F-1 车架总成 Frame Assy



序号 S/N	零部件序号 Part no	零部件名称	Description	数量 Quantity	备注 Remarks
1	MC-07-150-01-01	十字盘头螺丝M6*16	BOLT M6*16	5	
2	MC-07-150-01-02	喇叭支架	HOLDER HORN	1	
3	MC-07-150-01-03	主车架	MAIN FRAME	1	
4	MC-07-150-01-04	边撑螺栓	BOLT SIDE STAND	1	
5	MC-07-150-01-05	边撑	SIDE STAND	1	
6	MC-07-150-01-06	边撑弹簧	SPRING SIDE STAND	1	
7	MC-07-150-01-07	左脚蹬	L.FOOTREST	1	
8	MC-07-150-01-08	右脚蹬	R.FOOTREST	1	
9	MC-07-150-01-09	后左装饰板(镀铬)	L.RR.DECORATIVE SHEET	1	
10	MC-07-150-01-10	后右装饰板(镀铬)	R.RR.DECORATIVE SHEET	1	
11	MC-07-150-01-11	脚蹬安装轴	SHAFT FOOTREST	2	
12	MC-07-150-01-12	开口销1.8*20	SPLIT PIN 1.8*20	2	
13	MC-07-150-01-13	弹簧	SPRING	2	
14	MC-07-150-01-14	十字盘头螺钉M6*16	CRISSCROSS BALL-SHAPE-BOLT	4	
15	MC-07-150-01-15	后减震器组合	RR . SHOCK ABSORBER	2	
16	MC-07-150-01-16	六角法兰面螺栓M10*45	HEX FLANGE BOLT M10*45	2	
17	MC-07-150-01-17	自锁螺母M10	LOCK NUT M10	2	
18	MC-07-150-01-18	六角法兰面螺栓M8*30	HEX FLANGE BOLT M8*30	2	
19	MC-07-150-01-19	燃油传感器压盖	COVER FUEL SENSOR	1	
20	MC-07-150-01-20	燃油传感器	FUEL SENSOR	1	
21	MC-07-150-01-21	燃油传感器密封圈	SEAL GASKET FUEL SENSOR	1	
22	MC-07-150-01-22	油箱	FUEL TANK	1	
23	MC-07-150-01-23	油箱盖	FUEL TANK CAP	1	
24	MC-07-150-01-24	汽油过滤器	FUEL FILTER	1	
25	MC-07-150-01-25	汽油负压开关	FUEL LOW-TENSION SWITCH	1	
26	MC-07-150-01-26	油管I	FUEL TUBE I	1	
27	MC-07-150-01-27	汽油过滤器	FUEL FILTER	1	
28	MC-07-150-01-28	油管II	FUEL TUBE II	1	
29	MC-07-150-01-29	弹性卡箍Φ8	ELASTICITY FASTENER Φ8	3	

- 2 -

F-1 车架总成 Frame Assy



- 3 -

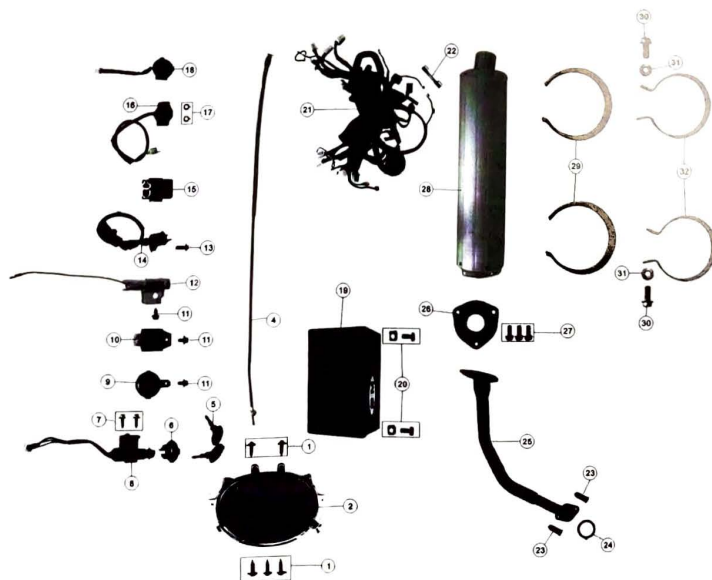




序号 S/N	零部件序号 Part no	零部件名称	Description	数量 Quantity	备注 Remarks
1	MC-07-150-02-01	自攻螺钉ST4.2*16	SCREW TAPPING ST4.2*16	5	
2	MC-07-150-02-02	仪表总成	SPEEDOMETER	1	
4	MC-07-150-02-04	里程线	SPEEDOMETER CABLE	1	
5	MC-07-150-02-05	钥匙	HEY	2	
6	MC-07-150-02-06	点火开关锁盖	COVER IGNITION SWITCH	1	
7	MC-07-150-02-07	六角法兰面螺栓M6*16	HEX FLANGE BOLT M6*16	2	
8	MC-07-150-02-08	点火开关锁	IGNITION SWITCH	1	
9	MC-07-150-02-09	喇叭	HORN	1	
10	MC-07-150-02-10	调压整流器	RECTIFIER	1	
11	MC-07-150-02-11	六角法兰面螺栓M6*12	HEX FLANGE BOLT M6*12	3	
12	MC-07-150-02-12	电阻	RESISTANCE	1	
13	MC-07-150-02-13	十字盘头螺栓M6*20	CRISSCROSS BALL-SHAPE-BOLT	1	
14	MC-07-150-02-14	点火线圈总成	IGNITION COIL COMP	1	
15	MC-07-150-02-15	CDI点火器	C.D.I	1	
16	MC-07-150-02-16	继电器	RELAY	1	
17	MC-07-150-02-17	六角螺母M6	HEX NUT M6	2	
18	MC-07-150-02-18	闪光器	SINGING SPARKING RELAY	1	
19	MC-07-150-02-19	电瓶	BATTERY	1	
20	MC-07-150-02-20	电瓶螺栓及螺母	BOLT&NUT BATTERY	2	
21	MC-07-150-02-21	主电缆总成	HARNES WIRE	1	
22	MC-07-150-02-22	保险管	FUSE	1	
23	MC-07-150-02-23	盖形螺母M6*30	CAP NUT M6*30	2	
24	MC-07-150-02-24	排气垫	MUFFLER GASKET	1	
25	MC-07-150-02-25	排气管	VENT-PIPE	1	
26	MC-07-150-02-26	消声器纸垫	MUFFLER WASHER	1	
27	MC-07-150-02-27	六角法兰面螺栓M8*20	HEX FLANGE BOLT M8*20	3	
28	MC-07-150-02-28	消声器筒体	MUFFLER	1	
29	MC-07-150-02-29	橡胶垫	RUBBER PAD	2	
30	MC-07-150-02-30	六角法兰面螺栓M10*25	HEX FLANGE BOLT M10*25	2	

- 6 -

F-2 电器件总成/排气管 Electric Device Assy/Muffler Assy



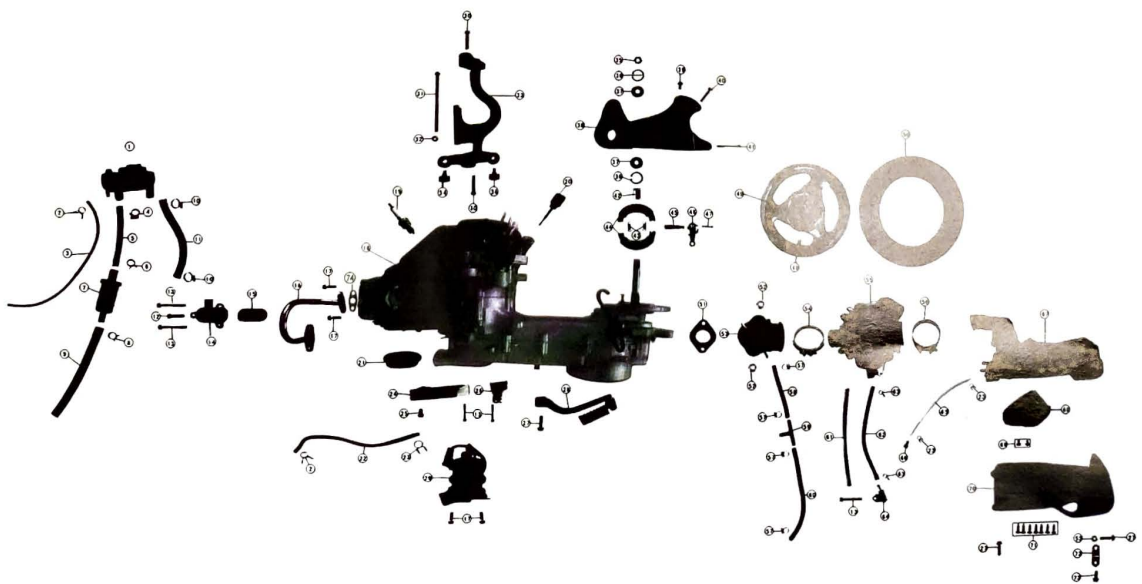
- 7 -



序号 S/N	零部件序号 Part no	零部件名称	Description	数量 Quantity	备注 Remarks
1	MC-07-150-03-01	负压开关	LOW-TENSION SWITCH	1	
2	MC-07-150-03-02	弹性卡箍7.5	ELASTICITY FASTENER $\Phi$ 7.5	2	
3	MC-07-150-03-03	进气管I	PIPE IN I	1	
4	MC-07-150-03-04	卡箍18	FASTENER $\Phi$ 18	1	
5	MC-07-150-03-05	通气管I	BREATHE TUBE I	1	
6	MC-07-150-03-06	弹性卡箍	ELASTICITY FASTENER	1	
7	MC-07-150-03-07	空气过滤器	AIR FILTER	1	
8	MC-07-150-03-08	弹性卡箍14	ELASTICITY FASTENER $\Phi$ 14	1	
9	MC-07-150-03-09	通气管II	BREATHE TUBE II	1	
10	MC-07-150-03-10	卡箍20	FASTENER $\Phi$ 20	2	
11	MC-07-150-03-11	通气管III	BREATHE TUBE III	1	
12	MC-07-150-03-12	六角法兰面螺栓M6*22	HEX FLANGE BOLT M6*22	1	
13	MC-07-150-03-13	六角法兰面螺栓M6*40	HEX FLANGE BOLT M6*40	5	
14	MC-07-150-03-14	单向阀盖	COVER ONE WAY VALVE	1	
15	MC-07-150-03-15	单向阀组件	ONE WAY VALVE COMP	1	
16	MC-07-150-03-16	补气弯管组件	BREATHE TUBE COMP	1	
17	MC-07-150-03-17	六角法兰面螺栓M6*16	HEX FLANGE BOLT M6*16	4	
18	MC-07-150-03-18	发动机总成	ENGINE ASSY	1	
19	MC-07-150-03-19	火花塞	PLUG SPARK	1	
20	MC-07-150-03-20	机油尺	GAUGE OIL SEAL	1	
21	MC-07-150-03-21	通气阀	FILTER ENGING	1	
22	MC-07-150-03-22	发动机废气管	WASTE PIPE ENGINE	1	
23	MC-07-150-03-23	弹性卡箍II	ELASTICITY FASTENER II	3	
24	MC-07-150-03-24	主撑缓冲板	DEAD BLOCK MAIN STAND	2	
25	MC-07-150-03-25	六角法兰面螺栓M6*12	HEX FLANGE BOLT M6*12	1	
26	MC-07-150-03-26	后制动拉索卡子	CLIP CABLE RR.BRAKE	1	
27	MC-07-150-03-27	六角法兰面螺栓M6*25	HEX FLANGE BOLT M6*25	3	
28	MC-07-150-03-28	启动杆总成	LEVER ASSY KICK STARTER	1	
29	MC-07-150-03-29	启动电机总成	STARTER	1	

- 10 -

F-3 发动机总成 Engine Assy



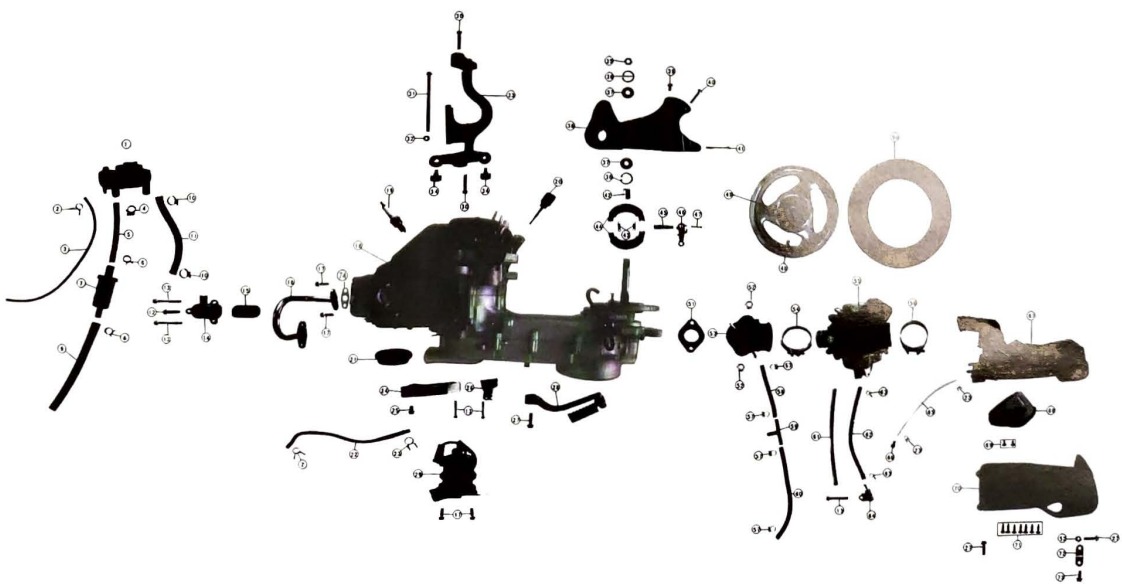
- 11 -



序号 S/N	零部件序号 Part no	零部件名称	Description	数量 Quantity	备注 Remarks
30	MC-07-150-03-30	六角法兰面螺栓M10*55	HEX FLANGE BOLT M10*55	2	
31	MC-07-150-03-31	动力吊架轴M10*185	SHAFT SWING BRACKET M10*185	1	
32	MC-07-150-03-32	自锁螺母M10	LOCK NUT M10	1	
33	MC-07-150-03-33	动力吊架	SWING BRACKET ENGINE	1	
34	MC-07-150-03-34	动力吊架胶	RUBBER SWING BRACKET	1	
35	MC-07-150-03-35	自锁螺母M16	LOCK NUT M16	1	
36	MC-07-150-03-36	卡簧	CIRCLIP	2	
37	MC-07-150-03-37	轴承6203	BEARING 6203	2	
38	MC-07-150-03-38	后减安装支架	BRACKET RR.BRAKE	1	
39	MC-07-150-03-39	六角法兰面螺栓M8*16	HEX FLANGE BOLT M8*16	1	
40	MC-07-150-03-40	六角法兰面螺栓M8*45	HEX FLANGE BOLT M8*45	1	
41	MC-07-150-03-41	六角法兰面螺栓M8*60	HEX FLANGE BOLT M8*60	1	
42	MC-07-150-03-42	衬套17*35	BUSH 17*35	1	
43	MC-07-150-03-43	后制动蹄片拉簧	SPRING RR.BRAKE BLOCK ASSY	2	
44	MC-07-150-03-44	后制动蹄片	RR.BRAKE BLOCK ASSY	2	
45	MC-07-150-03-45	后制动凸轮轴	CAMSHAFT RR.BRAKE	1	
46	MC-07-150-03-46	后制动摇臂	SWING ARM RR.BRAKE	1	
47	MC-07-150-03-47	六角法兰面螺栓M6*32	HEX FLANGE BOLT M6*32	1	
48	MC-07-150-03-48	气门嘴	AIR VALVE	1	
49	MC-07-150-03-49	后轮辋	REAR RIM	1	
50	MC-07-150-03-50	后轮胎130/60-13	RAER TYPE 130/60-13	1	
51	MC-07-150-03-51	隔热板	INSULATOR	1	
52	MC-07-150-03-52	六角法兰面螺母M6	HEX FLANGE NUT M6	2	
53	MC-07-150-03-53	进气管总成	INTAKE MANIFOLD	1	
54	MC-07-150-03-54	卡箍I	FASTENER I	1	
55	MC-07-150-03-55	化油器总成	CARBURETOR ASSY	1	
56	MC-07-150-03-56	卡箍II	FASTENER II	1	
57	MC-07-150-03-57	弹性卡箍7	ELASTICITY FASTENER Φ7	4	
58	MC-07-150-03-58	进气管II	PIPE IN II	1	

- 12 -

F-3 发动机总成 Engine Assy



- 13 -

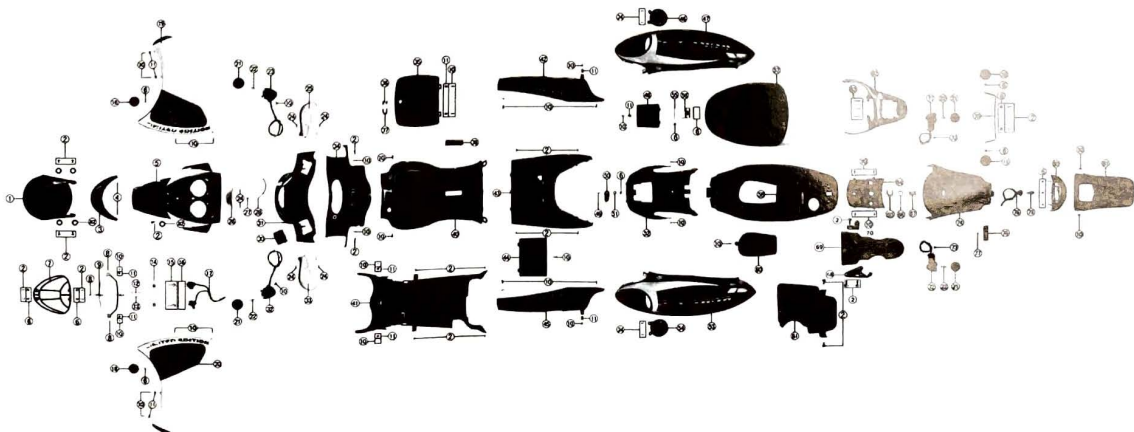




序号 S/N	零部件序号 Part no	零部件名称	Description	数量 Quantity	备注 Remarks
1	MC-07-150-04-01	前轮挡泥板	FRONT FRFENDER	1	
2	MC-07-150-04-02	六角法兰面螺栓M6*16	HEX FLANGE BOLT M6*16	26	
3	MC-07-150-04-03	前面板罩唇	MOUTH FRONT PANEL	1	
4	MC-07-150-04-04	自攻螺钉ST4.2*16	SCREW TAPPING,ST4.2*16	1	
5	MC-07-150-04-05	前面板	FRONT PANEL	1	
6	MC-07-150-04-06	六角法兰面螺母M6	HEX FLANGE BOLT M6	16	
7	MC-07-150-04-07	前照灯护网	NET HEAD LIGHT	1	
8	MC-07-150-04-08	十字盘头螺栓M5*12	CRISSCROSS BALL-SHAPE-BOLT	3	
9	MC-07-150-04-09	前照灯安装支架	BRACKET HEAD LIGHT	1	
10	MC-07-150-04-10	自攻螺钉ST4.8*16	SCREW TAPPING ST4.8*16	30	
11	MC-07-150-04-11	夹片	FLAKE	16	
12	MC-07-150-04-12	十字盘头螺栓M5*45	CRISSCROSS BALL-SHAPE-BOLT	1	
13	MC-07-150-04-13	调节弹簧	ADJUST SPRING	1	
14	MC-07-150-04-14	前照灯灯壳	COVER HEAD LIGHT	1	
15	MC-07-150-04-15	前照灯灯泡12V18W	BULB HEAD LIGHT 12V18W	2	
16	MC-07-150-04-16	弹簧	SPRING	2	
17	MC-07-150-04-17	前照灯电缆	WIRE HEAD LIGHT	1	
18	MC-07-150-04-18	前侧反射器	FR.SIDE REFLECTOR	2	
19	MC-07-150-04-19	前右装饰板	R.FR.DECORATIVE SHEET	1	
20	MC-07-150-04-20	前左装饰板	L.FR.DECORATIVE SHEET	1	
21	MC-07-150-04-21	转向灯壳	COVER TURNING LIGHT	4	
22	MC-07-150-04-22	转向灯灯泡	BULB TURNING LIGHT	1	
23	MC-07-150-04-23	前右转向灯组件	R.FR.TURNING LIGHT	1	
24	MC-07-150-04-24	自攻螺钉4.2*16	SCREW TAPPING ST4.2*16	10	
25	MC-07-150-04-25	右把手罩	RIGHT HANDLE COVER	1	
26	MC-07-150-04-26	前顶灯灯壳	COVER FR.TOP LIGHT	1	
27	MC-07-150-04-27	前顶灯灯泡12V3W	BULB FR.TOP LIGHT 12V3W	1	
28	MC-07-150-04-28	前顶灯电缆	WIRE FR.TOP LIGHT	1	
30	MC-07-150-04-30	刹车盖板	COVER BOARD BRAKE OIL	1	

- 16 -

F-4 覆盖件总成 Working Of Plastics Assy

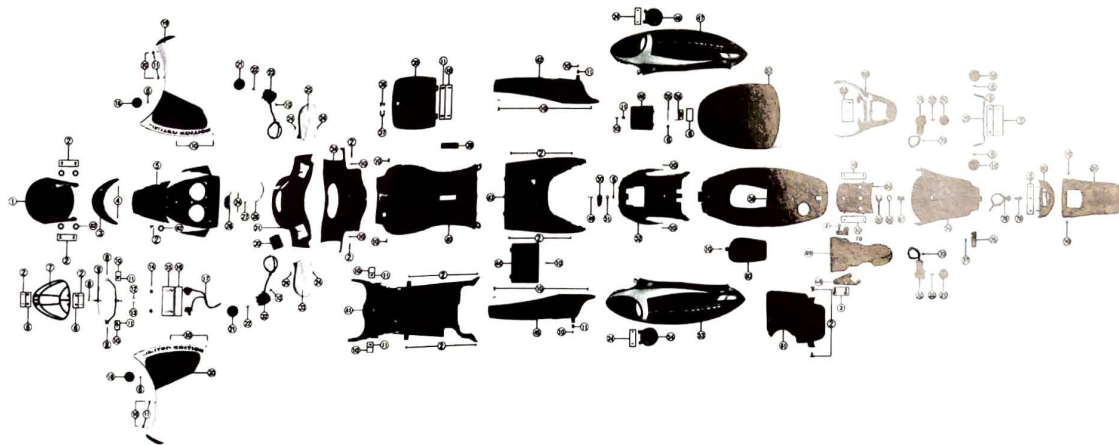




序号 S/N	零部件序号 Part no	零部件名称	Description	数量 Quantity	备注 Remarks
31	MC-07-150-04-31	头罩	HELMET SHEET	1	
32	MC-07-150-04-32	前左转向灯组件	L.FR.TURNING LIGHT	1	
33	MC-07-150-04-33	左把手罩	LEFT HANDLE COVER	1	
34	MC-07-150-04-34	仪表壳	SPEEDOMETER COVER	1	
35	MC-07-150-04-35	前置物箱盖	FRONT BOX COVER	1	
36	MC-07-150-04-36	前置物箱锁	FRONT BOX LOCK	1	
37	MC-07-150-04-37	前置物箱锁夹	CLIP FRONT BOX LOCK	1	
39	MC-07-150-04-39	VIN号码观察盖板	OBSERVE COVER,VIN	1	
40	MC-07-150-04-40	前置物箱	FRONT BOX	1	
41	MC-07-150-04-41	车架挡泥板	FRAME FENDER	1	
42	MC-07-150-04-42	右护条	R. PROTECTING BAR	1	
43	MC-07-150-04-43	脚踏板	FOOTREST	1	
44	MC-07-150-04-44	电瓶盖板	COVER BATTERY	1	
45	MC-07-150-04-45	左护条	L. PROTECTING BAR	1	
46	MC-07-150-04-46	后右通风板	R.RR.VENTILATION COVER	1	
47	MC-07-150-04-47	后右装饰板	R.RR.DECORATIVE SHEET	1	
48	MC-07-150-04-48	中央护罩盖	MIDDLE PROTECT SHEET COVER	1	
49	MC-07-150-04-49	六角法兰面螺栓M6*20	HEX FLANGE BOLT M6*20	1	
50	MC-07-150-04-50	头盔挂组合	HELMET HANGER COMP	1	
51	MC-07-150-04-51	平垫M6*18	WASHER M6*18	1	
52	MC-07-150-04-52	中央护罩	MIDDLE PROTECT SHEET	1	
53	MC-07-150-04-53	后左装饰板	L.RR.DECORATIVE SHEET	1	
54	MC-07-150-04-54	后左通风板	L.RR.VENTILATION COVER	1	
55	MC-07-150-04-55	坐垫安装轴	FIXING-SHAFT SEAT	1	
56	MC-07-150-04-56	坐垫安装支架	BRACKET SEAT	1	
57	MC-07-150-04-57	坐垫总成	SEAT	1	
58	MC-07-150-04-58	杂物箱	SUNDRIES BOX	1	
60	MC-07-150-04-60	化油器观察盖	OBSERVE COVER CARBURETOR	1	
61	MC-07-150-04-61	油箱底板	ENGINE UNDER COVER	1	

- 18 -

F-4 覆盖件总成 Working Of Plastics Assy



- 19 -





序号 S/N	零部件序号 Part no	零部件名称	Description	数量 Quantity	备注 Remarks
1	MC-07-150-05-01	左后视镜	L. RR. MIRROR	1	
2	MC-07-150-05-02	右后视镜	R. RR. MIRROR	1	
3	MC-07-150-05-03	装饰套	RUBBER RR.MIRROR	2	
4	MC-07-150-05-04	螺母M8	NUT M8	2	
5	MC-07-150-05-05	左把手套	L. HANDLE GRIP	1	
6	MC-07-150-05-06	油门转把	THROTTLE GRIP	1	
7	MC-07-150-05-07	方向把	STEERING HANDLE	1	
8	MC-07-150-05-08	自锁螺母M10	LOCK NUT M10	1	
9	MC-07-150-05-09	六角法兰面螺栓M10*40	HEX FLANGE BOLT M10*40	1	
10	MC-07-150-05-10	左综合开关 (前)	L. FR. SWITCH ASSY	1	
11	MC-07-150-05-11	十字盘头螺栓M5*25	CRISSCROSS BALL-SHAPE-BOLT	2	
12	MC-07-150-05-12	十字盘头螺栓M5*30	CRISSCROSS BALL-SHAPE-BOLT	2	
13	MC-07-150-05-13	左综合开关 (后)	L.RR.SWITCH ASSY	1	
14	MC-07-150-05-14	左制动手柄	L.BRAKE LEVER	1	
15	MC-07-150-05-15	后制动拉索	CABLE RR.BRAKE	1	
16	MC-07-150-05-16	弹簧垫5	ELASTICITY GASKET 5	1	
17	MC-07-150-05-17	螺母M5	NUT M5	2	
18	MC-07-150-05-18	台阶螺母M5*25	STEP BOLT M5*25	2	
21	MC-07-150-05-21	六角法兰面螺栓M6*22	HEX FLANGE BOLT M6*22	2	
22	MC-07-150-05-22	右综合开关 (前)	R. FR. SWITCH ASSY	1	
23	MC-07-150-05-23	前液压制动器固定块	FIXING BLOCK FR HYDRAULIC BRAKE	1	
24	MC-07-150-05-24	前液压制动器总成	FR. HYDRAULIC BRAKE ASSY	1	
25	MC-07-150-05-25	六角法兰面螺栓M8*30	HEX FLANGE BOLT M8*30	2	
26	MC-07-150-05-26	右综合开关 (后)	R. RR. SWITCH ASSY	1	
27	MC-07-150-05-27	右制动手柄	R.BRAKE LEVER	1	
28	MC-07-150-05-28	油门拉索	THROTTLE CABLE	1	
29	MC-07-150-05-29	七件套	7 PIECES SET	1	
30	MC-07-150-05-30	方向柱组件	STEERING ASSY	1	
31	MC-07-150-05-31	六角法兰面螺栓M8*45	HEX FLANGE BOLT M8*45	4	

- 22 -

F-5 转向总成 Turning Assy

